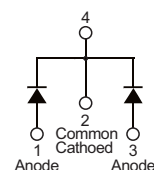


■ PRODUCT CHARACTERISTICS

VR(@IC=0.5mA)	200V
VF(@IF=10A)	0.86V
IR(@VR=200V)	20uA
ID	20A

Symbol

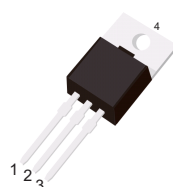


■ MECHANICAL CHARACTERISTICS

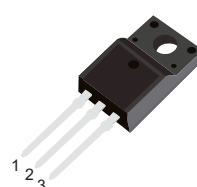
- * Case:Epoxy Molded
- * Leds are Readily Solderable

■ FEATURES

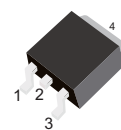
- * Guard ring for stress protection
- * Low forward voltage
- * Low Power Loss/High efficiency
- * High Surge capacity
- * Pb Free Packages are Available



TO-220



TO-220F



TO-263

■ ORDER INFORMATION

Order codes		Package	Packing
Halogen-Free	Halogen		
N/A	MBR20200UF	TO-220F	50 pieces/Tube
N/A	MBR20200UA	TO-220	50 pieces/Tube
N/A	MBR20200UE	TO-263	800 pieces/reel

■ MAIMUM RATINGS(Each diode leg)

Parameter	Symbol	Value	Unit
Peak repetitive reverse voltage	VRRM	200	V
Average rectified output current	Io	20	A
		10	A
Non-Repetitive Peak Forward Surge Current 8.3ms Single Half Sine-Wave Superimposed on Reate Load	IFSM	200	A
Operating and storage temperature range	TJ TSTG	-55 to +175	°C

■ ELECTRICAL CHARACTERISTICS

Parameter	Symbol	Test conditions	Min	Typ	Max	Unit
Peak repetitive reverse voltage	Bv	Ic=0.5mA TJ=25°C	200	-	-	V
Forward voltage drop	VF	IF=10A TJ=25°C	-	0.84	0.87	V
Leakage current	IR	VR=200V TJ=25°C	-	-	0.02	mA
		VR=200V TJ=125°C	-	-	6	

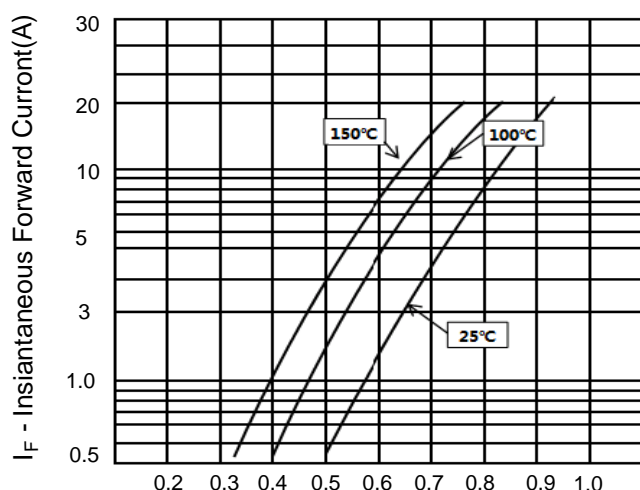


Figure 1. Typical Forward Voltage Per Diode

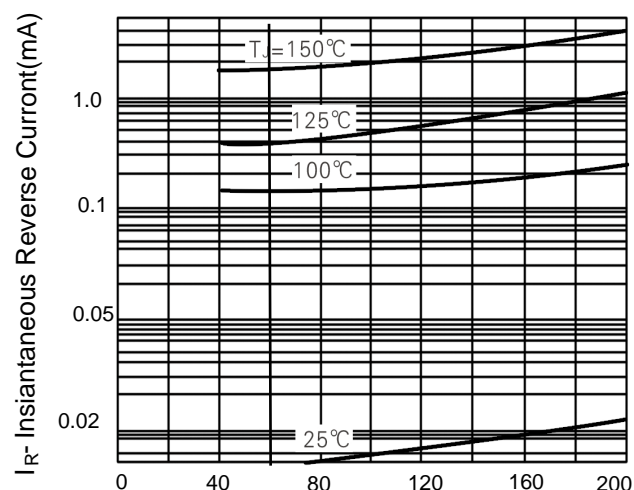


Figure 2. Typical Reverse Current Per Diode

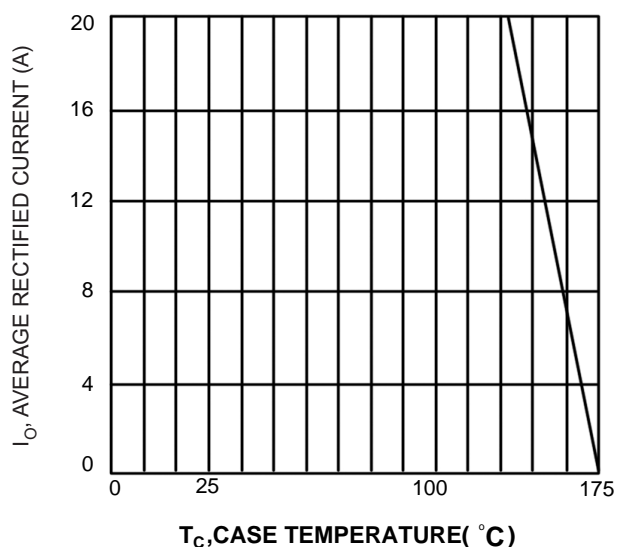


Fig.3 Forward Current Derating Curve

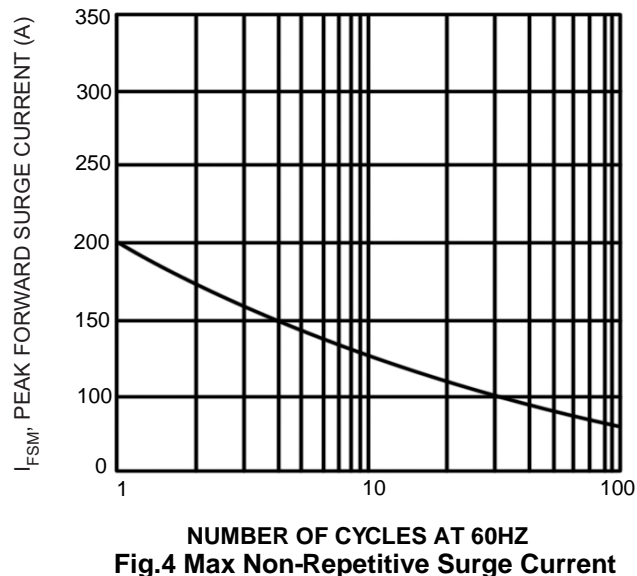
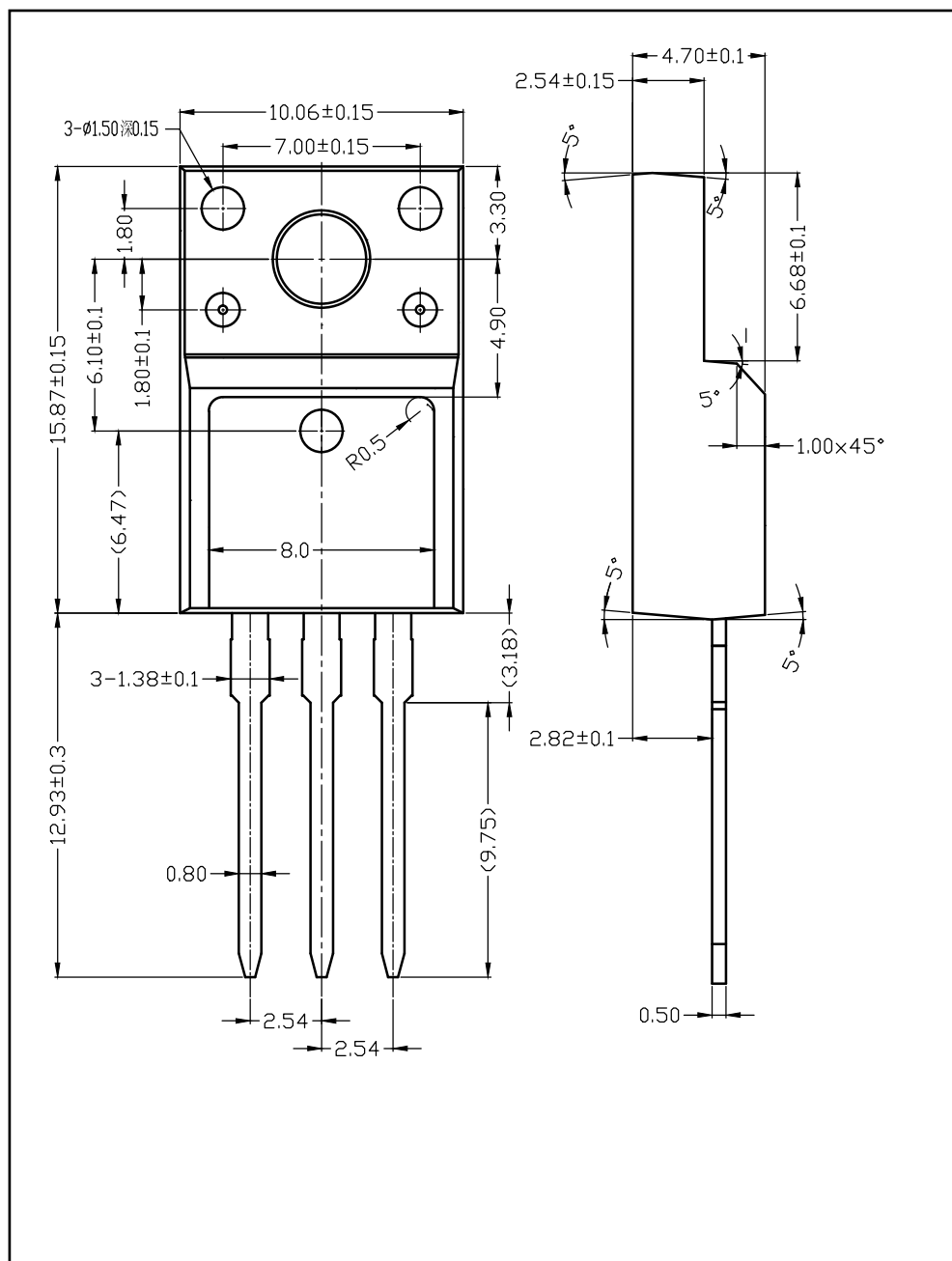
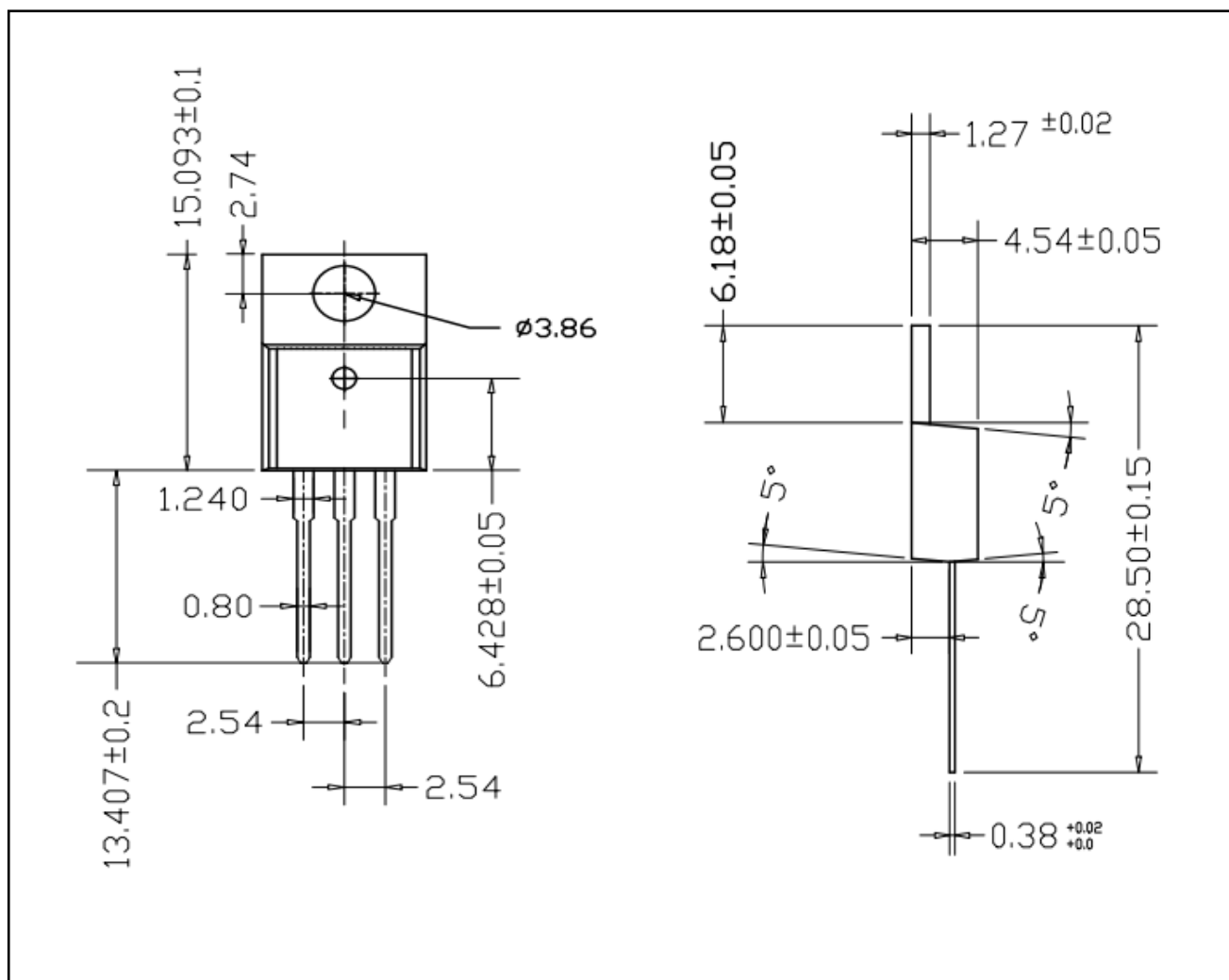


Fig.4 Max Non-Repetitive Surge Current

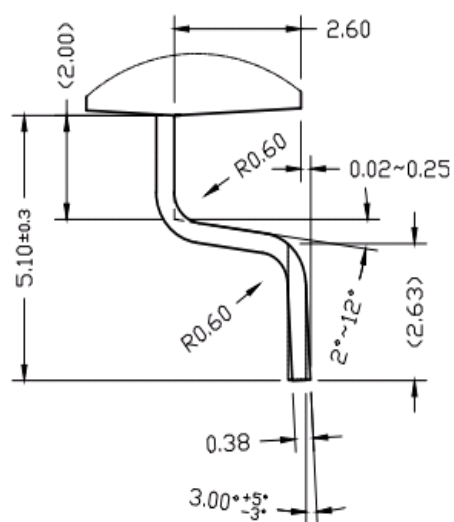
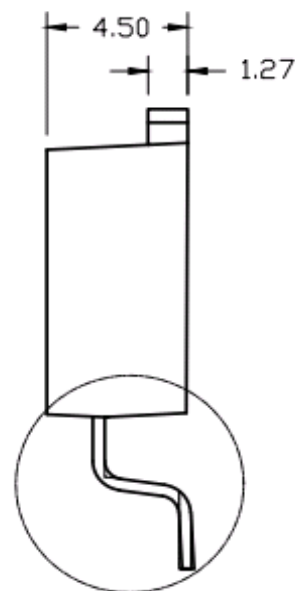
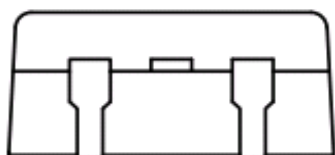
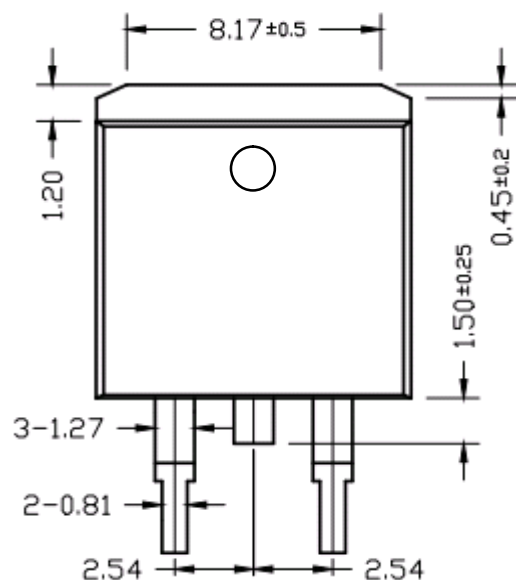
■ TO-220F-3L PACKAGE OUTLINE DIMENSIONS



■ TO-220-3L PACKAGE OUTLINE DIMENSIONS



■ TO-263-2L PACKAGE OUTLINE DIMENSIONS



Disclaimer

The content specified herein is for the purpose of introducing JMW's products (hereinafter "Products"). The information given in this document shall in no event be regarded as a guarantee of conditions or characteristics. Examples of application circuits, circuit constants and any other information contained herein illustrate the standard usage and operations of the Products. The peripheral conditions must be taken into account when designing circuits for mass production.

JMW does not assume any liability for infringement of patents, copyrights, or other intellectual property rights of third parties by or arising from the use of the Products or technical information described in this document.

The Products are not designed or manufactured to be used with any equipment, device or system which requires an extremely high level of reliability the failure or malfunction of which may result in a direct threat to human life or create a risk of human injury (such as a medical instrument, transportation equipment, aerospace machinery, nuclear-reactor controller, fuel-controller or other safety device). JMW shall bear no responsibility in any way for use of any of the Products for the above special purposes.

Although JMW endeavors to improve the quality and reliability of its products, semiconductor products have specific characteristics such as the occurrence of failure at a certain rate and malfunctions under certain use conditions. Please be sure to implement safety measures to guard them against the possibility of physical injury, and injury or damage caused by fire in the event of the failure of a JMW product.

The content specified herein is subject to change for improvement without notice. When using a JMW product, be sure to obtain the latest specifications.